

ELECTRIC
FOOD CHOPPER
WITH GLASS
BOWL



Instruction Manual

Table of Contents

- Table of Contents** **3**
- Symbol key 4
- Important Safeguards**..... **5**
- Proper use & care 6
- Package contents 7
- Appliance Features 8
- Preparing the food chopper for use 9
- Setting up 9
- Chopping 9
- Blending 10
- General hints for use 11
- Recipe suggestions 12
- Disposal 13
- Technical data 14

Symbol key



About these instructions

Read the safety instructions carefully before use. Note the warnings on the appliance and in the operating instructions. Always keep the Instruction Manual nearby. If you sell the appliance or pass it on to others, please ensure that you also include these instructions.

Symbols and key words used in these instructions



Danger!

Warning: Possible serious permanent and / or life threatening injuries.



Caution!

Please follow the guidelines to prevent injuries and/or property damage!



Warning!

Warning: danger of electric shock.



Warning!

Danger: sharp edges. Serious injuries may result.



Note

Additional information on using the appliance.

Important Safeguards

- Store this appliance out of reach of children.
- Use extreme supervision when this appliance is operated by or near children.



Danger!

Packaging material is not a toy. Children must not play with the plastic bags. There is a risk of suffocation.

- This appliance is designed for personal non-commercial use only and should not be operated outdoors.
- Only operate the appliance on a stable, level work surface.
- Never place the appliance near gas or electric stoves or heaters.
- Protect the appliance from moisture and do not expose it to dripping water or spray.
- Do not allow foreign objects or liquid to penetrate the appliance itself.
- Handle the blades carefully, including when emptying the bowl or other receptacles.



Warning!

Avoid all contact with moving parts. The food chopper blades are very sharp- and can cause severe injury.

- Only plug-in the appliance up when you intend to use it. Otherwise, unplug it from the outlet.
- Do not fill the bowl more than half way or up to 2 cups.
- After every 10 seconds of continuous use, pause the machine for 1 minute.
- Do not remove the lid until the blade has stopped moving.
- Never touch the blade while it is still moving.
- Do not use the food chopper if the blades are jammed, if they turn slowly or if the attachments are faulty!
- Do not insert any utensils (such as spoons or knives, etc.) into the moving blades or other moving parts and never place your hands in the bowl.
- Only connect the machine to an easily accessible, properly installed electrical outlet (120 V ~ 60 Hz), close to where you have set up the appliance. The outlet must be freely accessible, in case you need to unplug the appliance quickly.
- To avoid the risk of tripping, avoid using extension cords.
- Do not kink, crush, tug or run anything over the power cord. Do not allow the cord to hang down from the work surface. Protect it from sharp edges, oil and heat.

Proper use & care

- The food chopper is designed for chopping solid foodstuffs in normal kitchen quantities.
- Use only indoors.
- The food chopper is intended solely for use in private homes and is not suitable for commercial or restaurant use.
- If the power cord or appliance is damaged, unplug it from the outlet immediately.
- Never carry out repairs yourself.



Warning!

Never try to open and/or repair the appliance yourself. There is a risk of electric shock.

- In the event the food chopper fails to work properly, please contact the Customer Service Center. The Customer Service number is 866-633-4660. Hours of operation are Daily 8:00 am – 12:00 am except national holidays.
- To avoid danger, always have damaged power cords on appliances replaced by the manufacturer, an official customer service agent or other suitably qualified person.

Save these instructions

This appliance has a polarized plug (one blade is wider than the other). To reduce the risk of electric shock, this plug will fit in a polarized outlet only one way. If the plug does not fit in an outlet, reverse the plug. If it still does not fit, contact a qualified electrician. Do not modify the plug in any way.

User-Maintenance Instructions

Cleaning the unit

- For household only.
- Before cleaning, remove the plug from the outlet.
- Never immerse the motor unit in water or other liquids. Clean the housing using only a damp cloth and some mild dish soap if necessary.
- Do not use any abrasive items or products which could damage the glass when cleaning the bowl.
- Clean the bowl, splash guard lid and mixing disc with a mild soap solution. To prevent injuries, use only a scrub brush or a similar suitable cleaning utensil to clean the blades.
- After using heavily staining foods (carrots, tomatoes, etc.) clean the parts immediately, to prevent discoloration.
- The chopper is intended for chopping solid food items in normal kitchen quantities. The appliance is designed for use in indoor areas only. The appliance is intended solely for use in private homes. The appliance is not suitable for commercial purposes.

Package contents

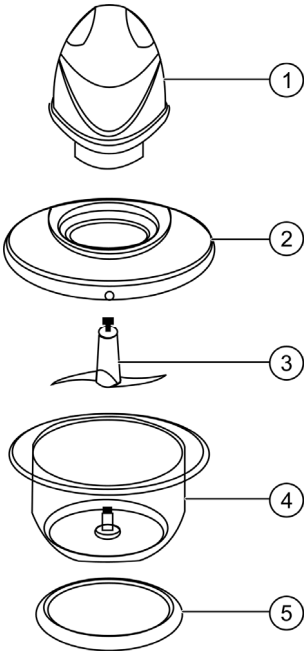
**Danger!**

Do not let children play with plastic packaging materials.
There is a risk of suffocation.

Remove all the packaging material and ensure that the following parts are included:

- Motor unit
- Splash guard lid for the bowl
- Chopping blade
- Mixing bowl
- Non-slip mat
- Mixing/whisking disc
- Instruction Manual and warranty card

Appliance Features



- 1. Motor unit
- 2. Splash guard lid for the bowl
- 3. Chopping blade
- 4. Mixing bowl
- 5. Non-slip mat
- 6. Mixing/whisking disc (not illustrated)

Preparing the food chopper for use

Before using this appliance for the first time, wash the bowl, splash guard lid, mixing disc and chopping blade in a mild soap solution or in the dishwasher. Grip the bowl using the handles only, not the guide pin.

Setting up

- ▶ Place the anti-slip mat on an even, stable work surface.
- ▶ Place the bowl on the anti-slip mat.
- ▶ Place the chopping blade on the guide pin and make sure that it rotates easily.
- ▶ Put the prepared ingredients into the bowl.
- ▶ Place the splash guard lid on the bowl so that the spaces on the edge of the lid are precisely above the bowl handles.
- ▶ Press the lid gently downwards until it sits firmly on the bowl.
- ▶ Place the motor unit in the lid recess so that the protruding pieces on both sides slide into the proper spaces in the lid and the star-shaped chopper blade bracket clicks into place in the bracket under the motor unit.

You can turn the motor unit slightly from side to side to make it easier to click into place. Please note that the appliance cannot be switched on if the motor unit has not been properly attached.

Chopping

- ▶ When the bowl has been filled and the lid placed on top, insert the plug in the outlet.
- ▶ Hold the bowl firmly with one hand and press the upper part of the motor unit gently downwards. The blade will start to rotate and chop the food.



Note

For the best results, work in pulses. Operating for longer periods will chop the food too small.



Caution!

After 10 seconds, stop the appliance for one minute, to prevent damage from overheating.

- ▶ If pieces of food remain stuck to the inside of the bowl (e.g. in the case of herbs or other moist foods), remove them with a flat stirrer or spatula, spread them around the bowl and then chop them up with two or three pulses.
- ▶ When the food has been chopped small enough, wait until the blade stops.
- ▶ Unplug the appliance from the outlet.
- ▶ Detach the motor unit and carefully remove the blade then you can take out the chopped ingredients.

Blending

- ▶ Place the mixing/whisking disc on the guide pin and make sure that it rotates easily.
- ▶ Fill the bowl with a maximum of 2 cups of ingredients to blend.
- ▶ Place the splash guard lid on the bowl so that the spaces on the edge of the lid are precisely above the bowl handles.
- ▶ Press the lid gently downwards until it sits firmly on the bowl.
- ▶ Place the motor unit in the lid recess so that both side lugs slide into the proper spaces in the lid and the star-shaped mixing disc bracket clicks into place in the bracket under the motor unit.
- ▶ Plug into the outlet.
- ▶ Hold the bowl firmly with one hand and press the upper part of the motor unit gently downwards, pulsing briefly two or three times.
- ▶ The mixing disc blade starts to rotate and whisks the food. When the food has been beaten enough, wait until the mixing disc stops.
- ▶ Unplug the appliance from the outlet.
- ▶ Detach the motor unit and carefully remove the mixing disc then you can take out the blended ingredients.

General hints for use

- ▶ Fill the bowl according to the directions in the table below.
- ▶ Cut up larger pieces of food so that they are small enough to fit into the bowl without being squashed.

Food	Max. filling quantity	Preparation	Mixing time
Meat	14 oz	Remove bones, fat and cartilage. Cut the meat into pieces of 1–2 cm.	10 sec.
Herbs	2 oz	Remove the stalks and stems	5 pulses
Nuts	10 oz	Remove the shells	10 sec.
Cheese	3 oz	Cut the cheese into pieces of 1–2 cm.	8 sec.
Bread	3 oz	Cut the bread into pieces of 1–2 cm.	10 sec.
Hard-boiled eggs	6	Halve or quarter the eggs	5 pulses
Onions	9 oz	Cut the onion into pieces of 1–2 cm.	8 pulses
Soft fruit	10 oz	Remove the stalks and stems	8 sec.
Stale rolls	5 oz	Cut the rolls into small pieces	10 sec.

Use the chopping blade for all the examples in this table.



Caution!

The chopping blade supplied is suitable only for the foods mentioned or for similar ones. There is a risk of the blade breaking if not used properly such as with extremely hard foods like ice cubes, nutmeg or coffee beans.

Recipe suggestions

Vanilla, honey and plum spread

(use the chopping blade)

Ingredients:

2 oz creamed honey
1-8 oz dried plums
6 teaspoons water
vanilla flavoring

Directions:

Put the honey and the plums into the bowl and mix for approx. 10 seconds then add the water and the vanilla flavoring and mix everything until it reaches a creamy consistency, using 4–5 pulses.

Orange salad dressing

(use the mixing/whisking disc)

Ingredients:

juice of half a lemon
juice of half an orange
4 tbsp sunflower oil
1 teaspoon mustard
herb salt
curry powder

Directions:

Add the mustard and the other ingredients in the bowl, using three pulses to mix then season with salt and curry powder.

Disposal



Packaging

This appliance and its packaging made of material that can be disposed of in an environmentally friendly way and can be properly recycled.



Appliance

At the end of its service life, the appliance should not be disposed of with the household trash. Please consult your local authority for advice on correct and eco-friendly methods of disposal.



Technical data

Power rating 300 watts
Short-term operation: 10 seconds (one minute to cool down)
Power supply: 120 V ~ 60 Hz



Intertek
4004161

Specifications subject to change without notice.

LIMITED WARRANTY

Thank you for purchasing a top quality **Crofton** product. This **Electric Food Chopper with Glass Bowl**, item #40942 (Model MD10517), was tested and meets our stringent quality standards. This product is warranted to be free from manufacturing defects in original materials, including original parts, and workmanship until **November 16, 2013** or 3 years with proof of purchase.

The warranty is void if the defect is due to accidental damage, misuse, abuse, neglect, improper repair or alteration by unauthorized persons or failure to follow operation instructions provided with the product. This warranty does not apply to commercial use.

The warranty is non-transferable and applies only to the original purchase and does not extend to subsequent owners of the product. Liability under this warranty is limited to replacement or refund at Medion AG's discretion. In no event shall liability exceed the purchase price paid by the purchaser of the product. Under no circumstances shall there be liability for any loss, direct, indirect, incidental, special or consequential damage arising out of or in connection with the use of this product. This warranty is valid only in the United States of America. This warranty gives you specific legal rights, however, you may have other rights that vary from state to state. Some states do not allow limitation on implied warranties or exclusion of consequential damages therefore these restrictions may not apply to you. This warranty is only valid in the USA within the 48 contiguous states.

In case you find the product to be defective please send it within the warranty period to our service center. To avoid transport damages please send the product in the original packaging if at all possible. In return you will either receive a new product or a refund. Please fill out the Warranty Card and send it together with the product and purchase receipt.

Medion AG

1-866-633-4660

Customer service hours: daily 8:00 am - 12:00 am except national holidays.

WARRANTY INFORMATION



PLEASE DETACH THIS SECTION AND RETURN IT WITH YOUR PRODUCT

WARRANTY CARD

Electric Food Chopper with Glass Bowl, Item #40942, Model #MD10157

In case you find this product to be defective please send it within the warranty period to our service center. To avoid transport damages please send the product in the original packaging. In return you will receive your repaired item, a new product or a refund.

PLEASE PRINT CLEARLY

Customer Name	
Street	
City	
State	
ZIP Code	
Purchase Date	
Description of Defect :	

Medion AG
866-633-4660
Customer service hours: daily 8:00 am - 12:00 am except national holidays.

WARRANTY CARD



MEDION AG
Toll Free Customer Care at:
866-633-4660
Daily* 8:00 am - 12:00 CST
*except holidays
www.medionusa.com